

ZMODO Zsight Android User Manual

Contents

1 Software Installation.....	3
1.1 Product Introduction.....	3
1.2 Environment Requirements.....	3
1.3 Installation Steps.....	3
2 Operation Instructions.....	3
2.1 Procedure Start.....	3
2.2 Device Management.....	4
2.2.1 Add Device.....	4
2.2.2 Edit Device.....	7
2.2.3 Delete Device.....	8
2.3 Network Setting.....	8
2.4 Video Display.....	10
2.5 About.....	12

1 Software Installation

1.1 Product Introduction

As IP Camera, DVR, NVR are further applied in security and monitoring industry, more users need one mobile monitoring software to contribute to their daily work. ZMOD0 invented Zsight software to receive real-time video from ZMOD0 DVR or IP camera. This user manual mainly describes how to install and operate the software.

1.2 Environment Requirements

Hardware : Android phones

System : Android 2.2 and up

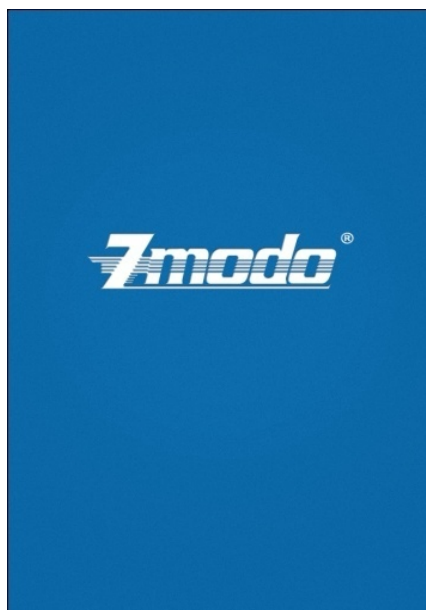
1.3 Installation Steps

Download MOD0 Zsight from Google Play with Android phones.

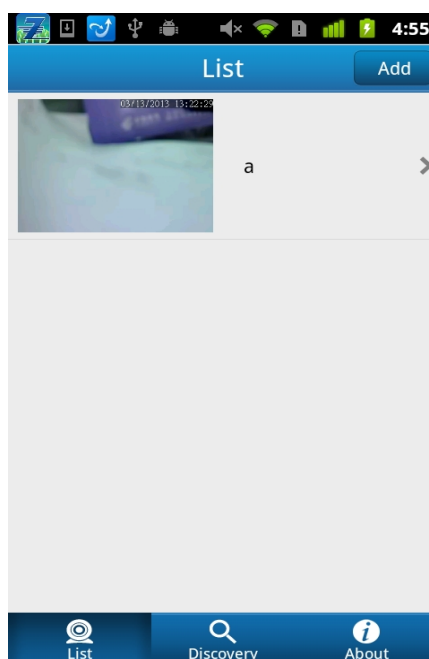
2 Operation Instructions

2.1 Procedure Start

Find and open Zsight, click the ZMOD0 Zsight icon, then device will automatically entered to "Device List" as follow:



ZMODO Start Interface



Device List Interface (Main Interface)

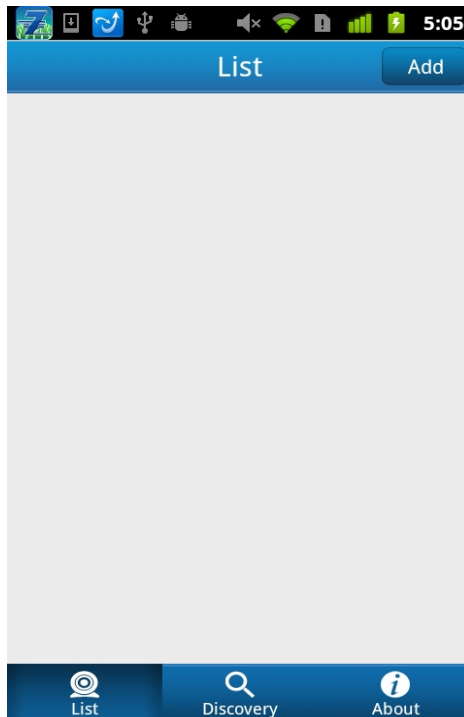
2.2 Device Management

2.2.1 Add Device

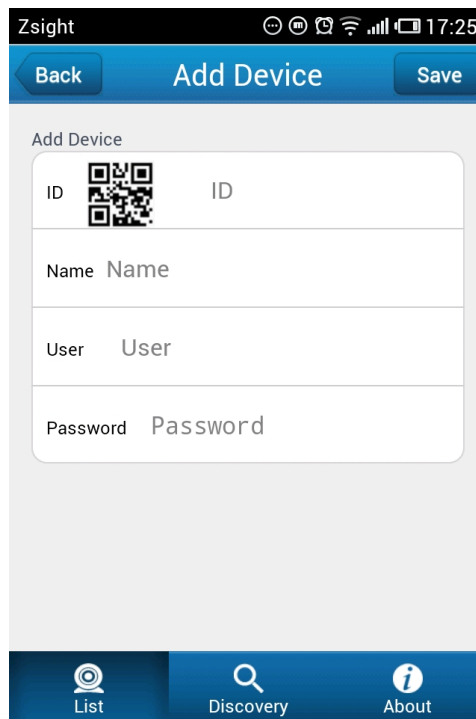
There are mainly two ways to add device: manually and autoadd.

◆ First Way: Manually

Click [Add] tab on the upper right corner of title bar to add device.



Add



Device Info Interface

Name: Device name, with maximum 60 chars

ID: Refer to the ten-digit number. There are two ways to get the ID: 1) put the cursor to ID

location to manually fill in; 2) click  and scan QR Code with phone, then device will automatically entered to Wi-Fi interface (we will introduce how to set network parameter after scanning ID)

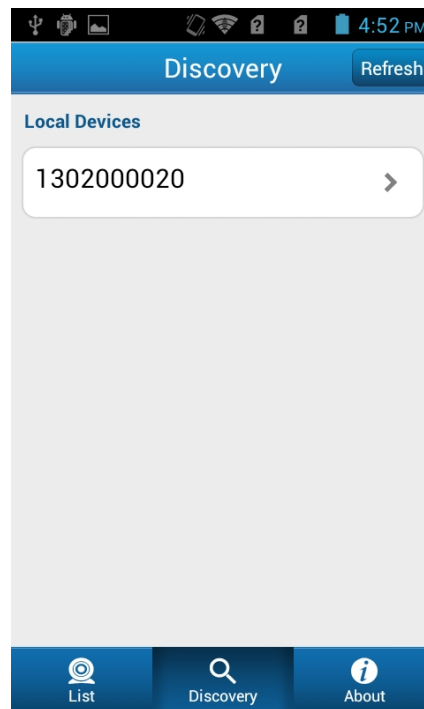
User: Login in or access device with user name; default user name is admin.

Password: Access device with relevant password.

Input all of the device info, and click [Save] to finish adding device.

◆Second Way: AutoAdd

Click [Discovery] tab to enter to Search interface; click [Refresh] tab, your phone will automatically search all local devices; select the desired device to enter to “Wi-Fi Network Configuration Interface” , then device is successfully added after relevant parameters are configured; you can refer to 2.3 “Network Configuration” to see Wi-Fi parameter setting.

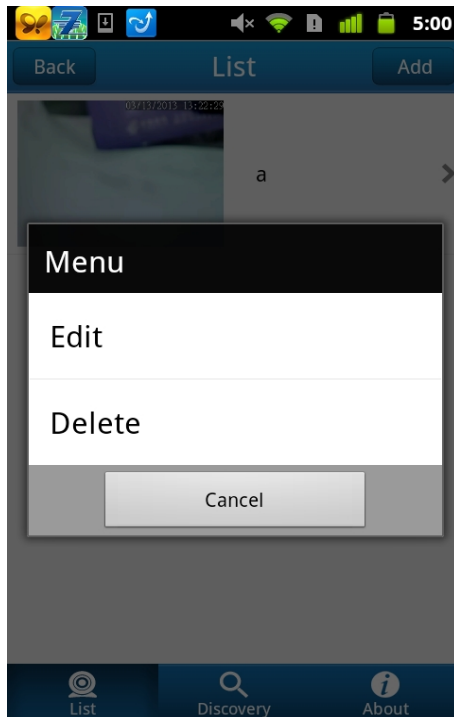


Device Search Interface

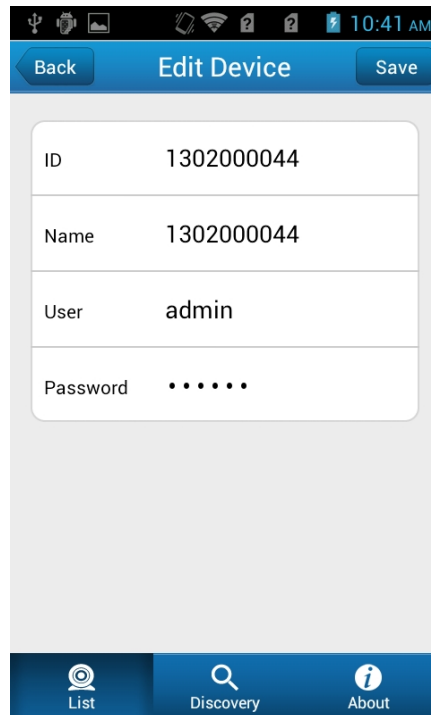
2.2.2 Edit Device

Select the to-be-edited device and press it for several seconds until “Delete Box” is displayed;

Click [Edit] tab, “Edit Interface” will be displayed; then click [Done] tab to save or [Back] tab to discard.



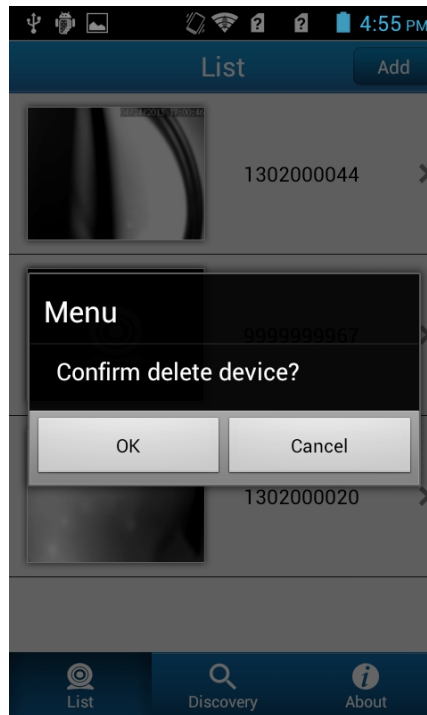
Edit Menu



Edit Device Interface


2.2.3 Delete Device

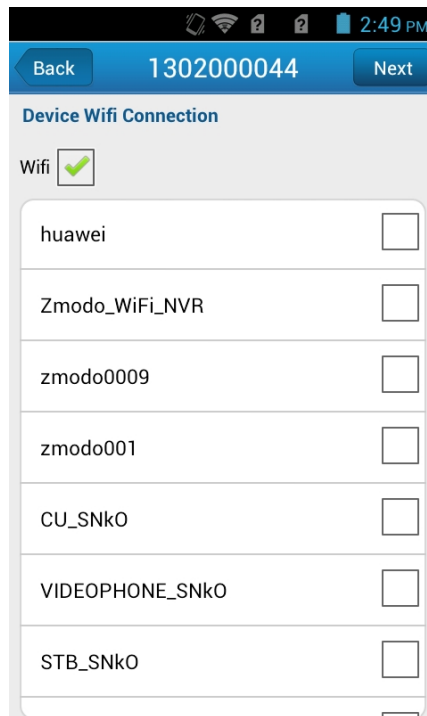
Select the to-be-deleted device in “Device List”, and press it for several seconds, then “Edit and Delete Box” will be displayed; select delete, click [OK] tab to confirm delete, or [Cancel] tab to undelete:



Delete Menu

2.3 Network Setting

Click  and scan QR Code with phone, the device will automatically entered to Wi-Fi interface:



Wi-Fi Connection

Click the desired Wi-Fi, then “Enter Password Interface” will be displayed:

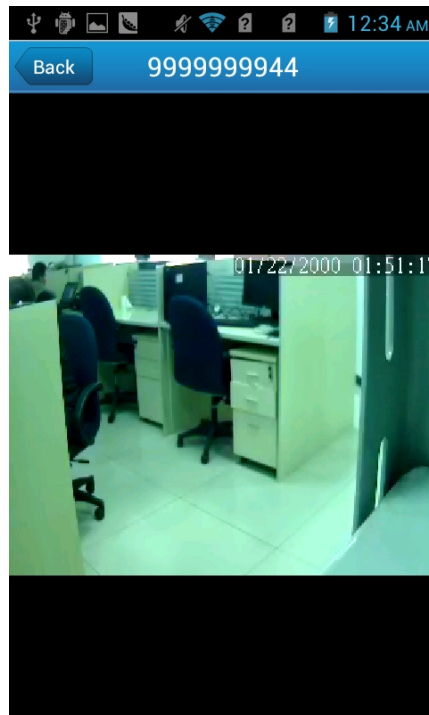


Enter Wi-Fi Password Interface

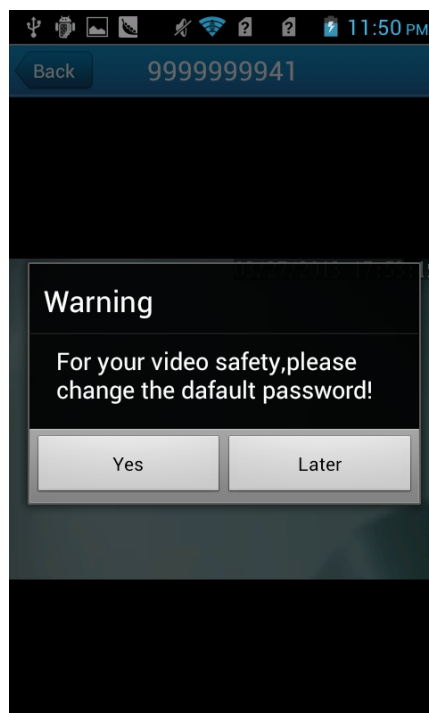
Enter Wi-Fi password, click [Save] to complete Wi-Fi connect setting.

2.4 Video Display

Click any device in “Device List” to enter to “Device Real-time Surveillance Interface”. If this is the first time using default password to connect video, “Change Password Interface” will be displayed:

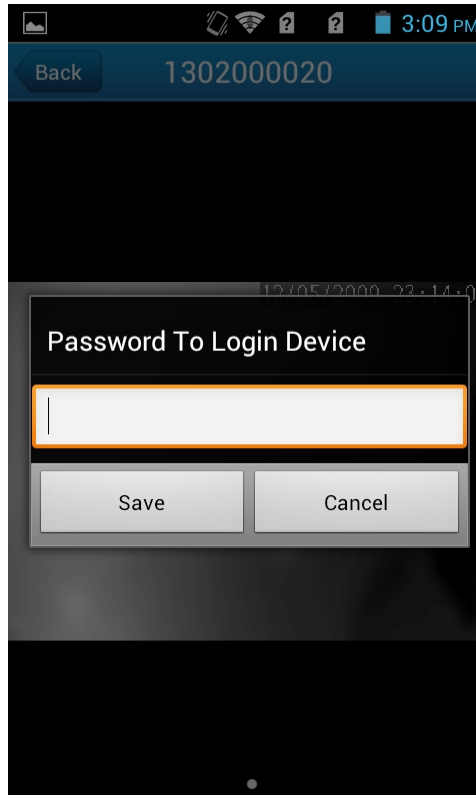


Device Real-time Surveillance Interface



Warning about Changing Password

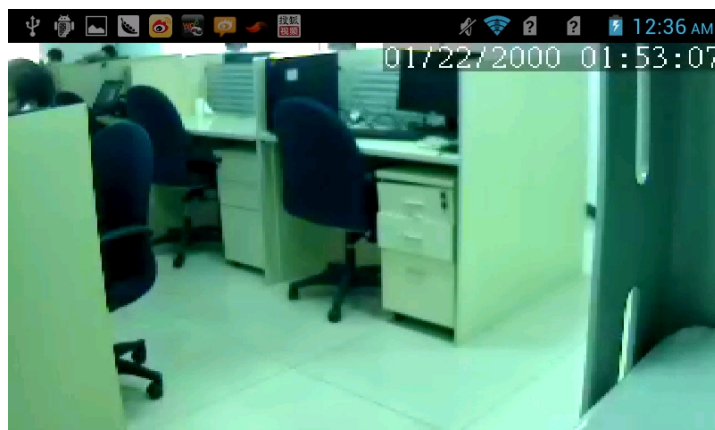
Click [Later] tab to change password later and [Yes] tab, then “Change Password Interface” will be displayed:



Change Login Password Interface

Enter the new password, click [Save] tab when finished.

Adjust phone horizontally or vertically to freely convert landscape and portrait mode:



Portrait Mode

2.5 About

You can refer to “About Interface” for software version and other info:



About Interface