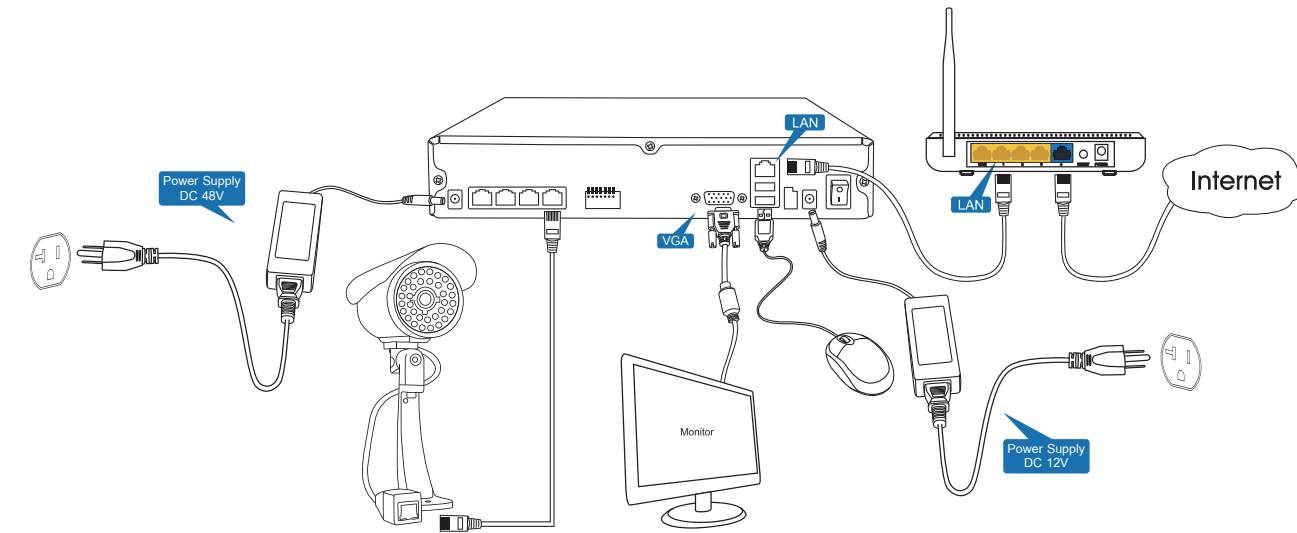
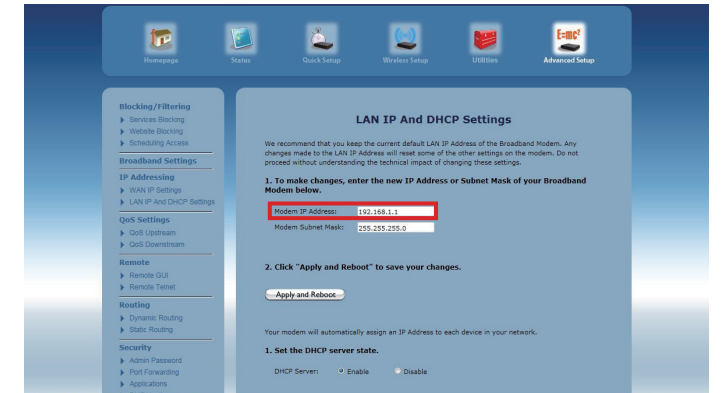


1 GETTING STARTED



Note:

1. Please make sure that router's **UPNP** is enabled before connecting camera.
2. Please make sure that your mobile device is connected to the same network as the NVR.
3. Please make sure that IP Cameras, NVR and router are in the same network. IP Cameras' default IP addresses are 192.168.1.150, 192.168.1.152, 192.168.1.154, 192.168.1.156. NVR's default IP address is 192.168.1.10, so router's IP address must be set 192.168.1.1. Here we have an Actiontec router as an example:



2 CONNECTING TO YOUR CAMERA ON iOS AND ANDROID

System Requirements: iPhone: iPhone v4.3 up and a valid iTunes account. Android: Android v2.3 up.

1 Download and install Zmodo Zsight software from the App store (iPhone) or Google play (Android) or download from website:
www.zmodo.com/support-software/

2 Tap the icon from the home screen to open Zmodo Zsight, and click [Add], this will take you to the "Add Device" section.

3 Tap the image of QR code, then scan the QR code area on the NVR with your phone.

4 Enter the default password "111111", and click [Save].

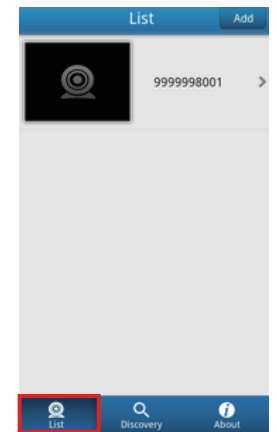
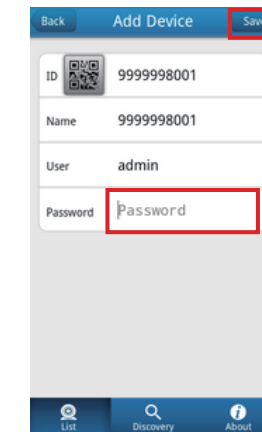
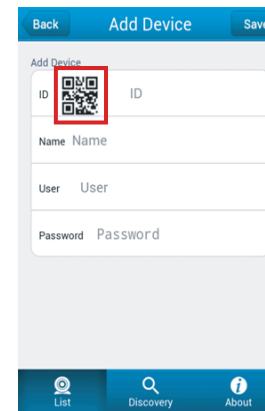
5 Click the device from the [List] on your mobile device, and you will be able to see the video stream.



iPhone



Android



Note:
 If your phone can not scan QR code, please refer to Zviewer for phone (Android and iOS) Website:
www.zmodo.com/support-software/

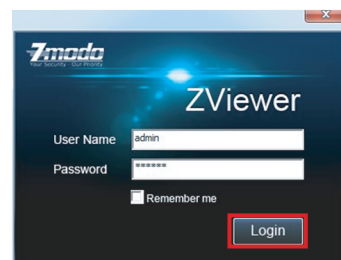
3 CONNECTING TO YOUR CAMERA ON PC

★ Install the ZViewer windows software from www.zmodo.com/support-software/. There are two ways to connect your camera on PC.

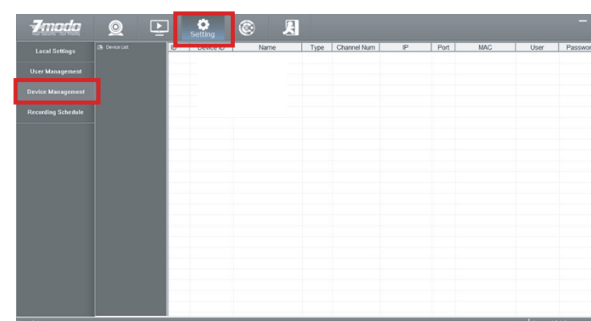
First Method: Remote connection by adding NVR's ID

★ **Note:** NVR and Internet must be connected.

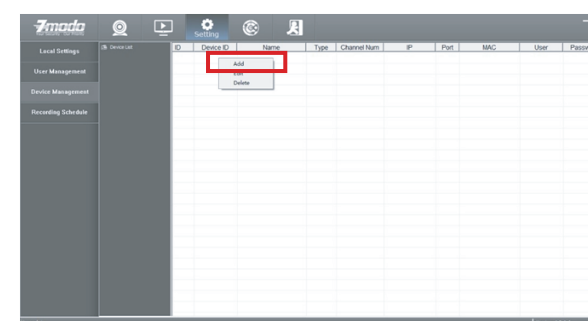
1 Launch ZViewer on your PC, enter "User Name" (Default: admin) and "Password" (Default: 111111), then click [Login].



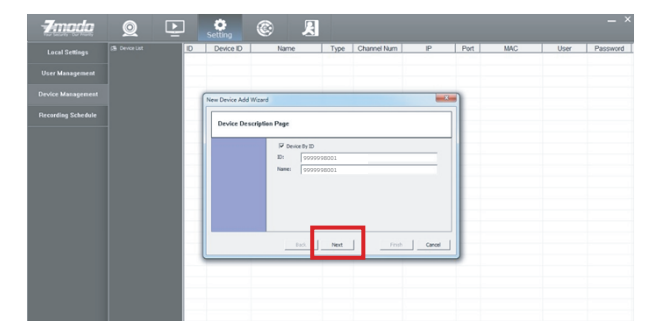
2 Find "Setting", and click [Device Management].



3 Right click in the blank area on the right, then select [Add].



4 Click [Device by ID], enter ID number, and click [Next].



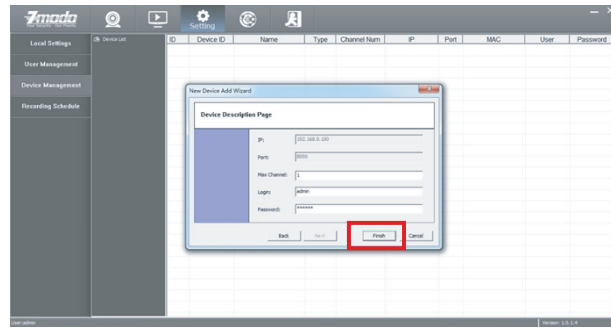
- Package Includes**
- (1) 4 Channel Security NVR
 - (4) IP Network Cameras
 - (1) 12V 3A Power Adapter for NVR
 - (1) 48V 1A Power Adapter for NVR to Provide Power to IPC
 - (4) 60ft Network Cables
 - (1) 3ft Network Cable
 - (1) IR Remote Control & Mouse
 - (1) Quick Installation Guide

Download (Website: <http://www.zmodo.com/support-software/>)

List Includes:

- Zsight-iOS(Software)
- Zsight-Android (Software)
- Zviewer-Windows (Software)
- Zviewer-iOS(Software)
- Zviewer-Android(Software)
- Zmdplayer(Software)
- IPCSearch(Software)

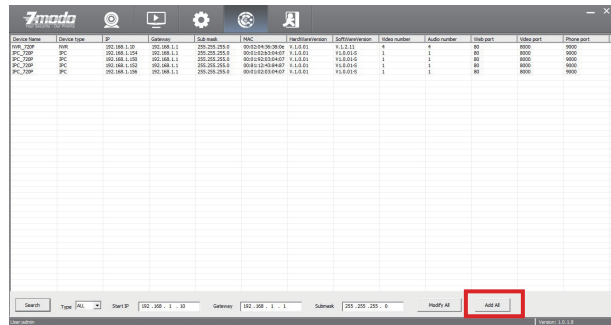
5 Enter "Login"(Default: admin) and "Password" (Default: 111111), then click [Finish].



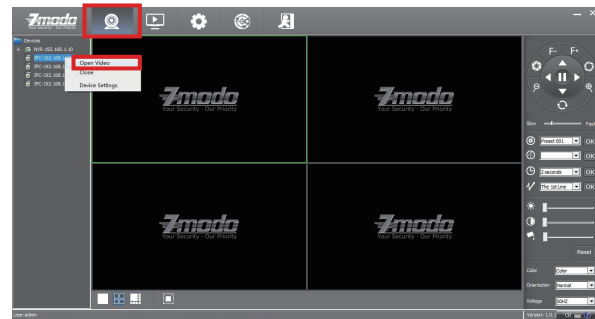
6 Go back to the Live interface, right click the device from the list, and select "open video", the video stream will display in the first available window.



3 Click [Add all] to add your devices, you will be prompted after successfully adding them.

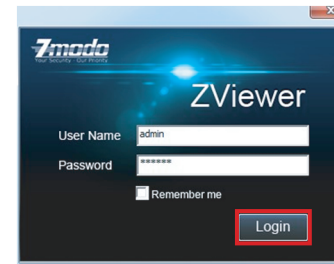


4 Go back to the Live interface, right click a device name from the Device List, then click [Open Video].



Second Method: Search your LAN

1 Launch ZViewer on your PC, enter "User Name" (Default: admin) and "Password" (Default: 111111), then click [Login].

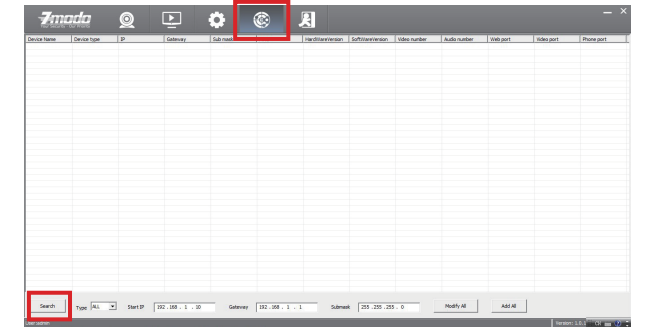


5 The video can now be seen within your local network.



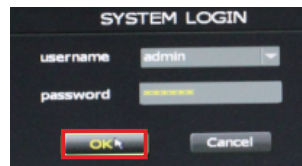
★ **Note:** NVR and PC must be in the same LAN.

2 Find "Discovery", and click [Search] on left bottom to search device.

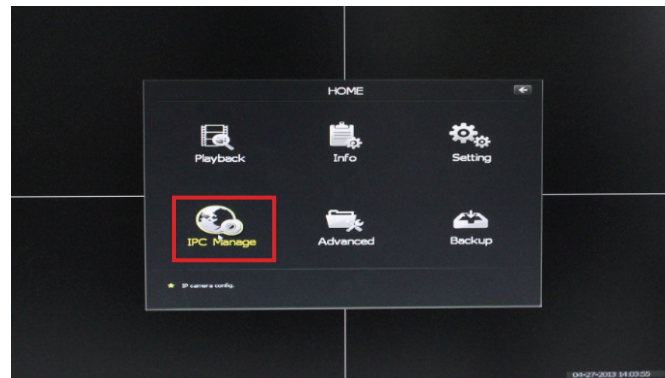


4 LIVE VIEW OF IP CAMERA ON MONITOR

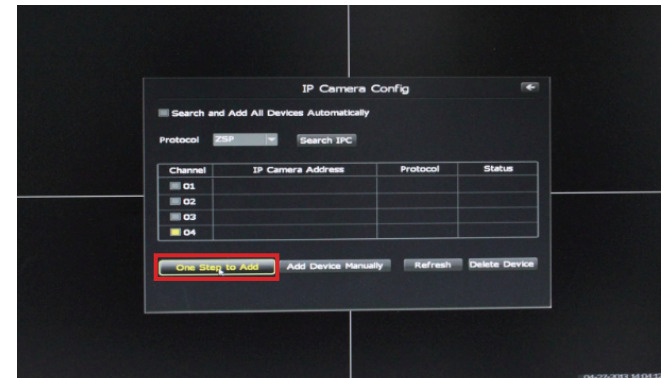
1 Power on NVR, you will see the NVR log interface, enter the default password "111111", and click [OK].



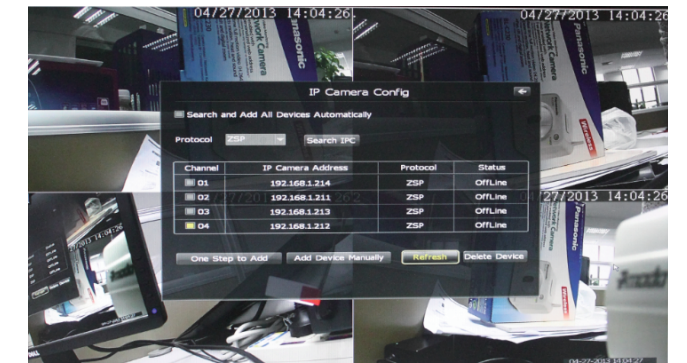
2 Click [IPC Manage], this will take you to the "IP Camera Config" section.



3 Click [One Step to Add] to automatically search the IP cameras in LAN. System will automatically add 4 cameras at one time.

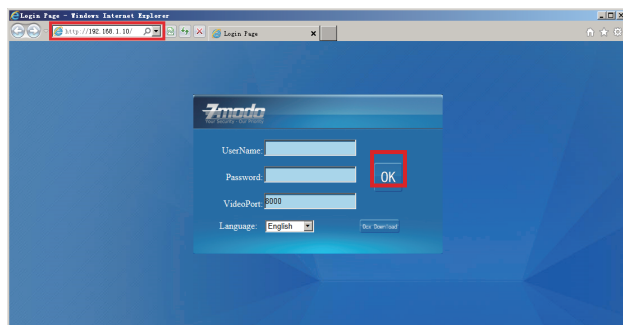


4 Just wait 5-10 seconds, you will be able to see the video stream.

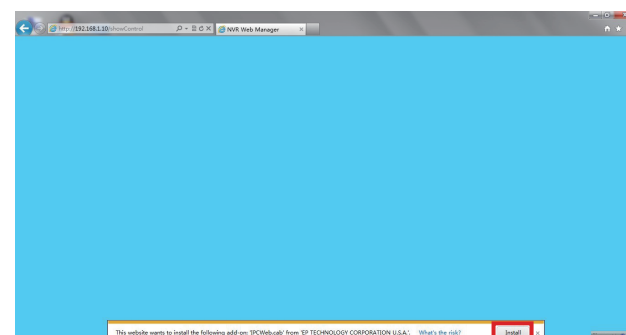


5 LIVE VIEW OF IP CAMERA ON INTERNET EXPLORER

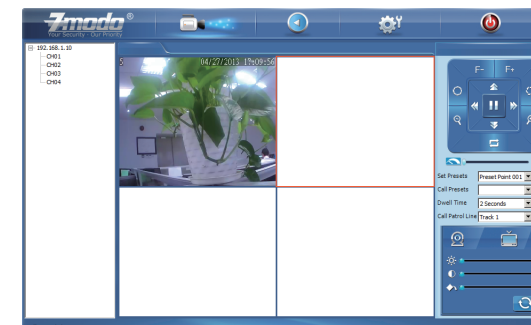
1 Navigate to 192.168.1.10 (NVR's default IP address, or search by IPCSearch) in your browser, this will take you to the login section. Enter the default UserName "111111" then Password "admin", and click [OK].



2 You will be prompted with "This website wants to install the following add-on". Click [Install] to run the necessary controls.



3 It may need 30 seconds to download the controls. System will automatically enter to the preview interface. Double click the device or channel to see the video.



Follow the steps below to troubleshoot issue.

Unable to access IP Camera by 3G or Internet

Ensure router's hotspot is turned on.
Ensure [UPNP] is enabled on the router.

Wireless Security System

If you ever have any problems setting up or using this product, call the TOLL-FREE number below for additional assistance.

FREE 866-551-6881

Telephone Service Hours: Mon-Fri 8:00am-8:00pm CST

Please go to www.zmodo.com/support-software/ to download the installation software and user manual.