

ZMODO Zsight Android User Manual

Contents

1 Software Installation.....	3
1.1 Product Introduction.....	3
1.2 Environment Requirements.....	3
1.3 Installation Steps.....	3
2 Operation Instructions.....	3
2.1 Procedure Start.....	3
2.2 Device Management.....	5
2.2.1 Add Device.....	5
2.2.2 Edit Device.....	7
2.2.3 Delete Device.....	7
2.3 Network Setting.....	8
2.4 Video Display.....	10
2.5 About.....	11

1 Software Installation

1.1 Product Introduction

As IP Camera, DVR, NVR are further applied in security and monitoring industry, more users need one mobile monitoring software to contribute to their daily work. ZMODO invented Zsight software to receive real-time video from ZMODO DVR or IP camera. This user manual mainly describes how to install and operate the software.

1.2 Environment Requirements

Hardware: iPhone v4.3 up or iPod touch

System: iOS4.3 or up

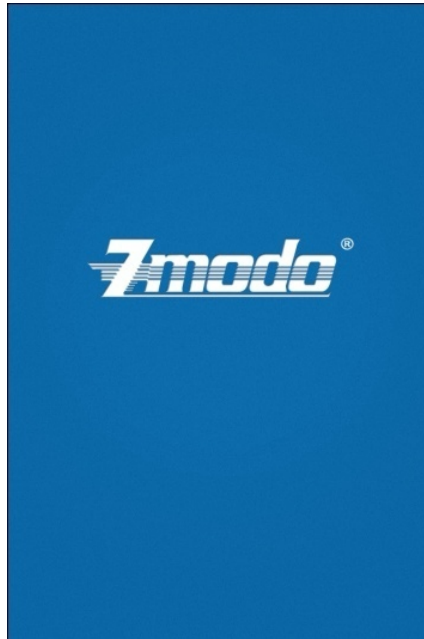
1.3 Installation Steps

Download Zsight software from iTunes App Store.

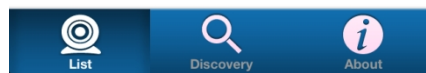
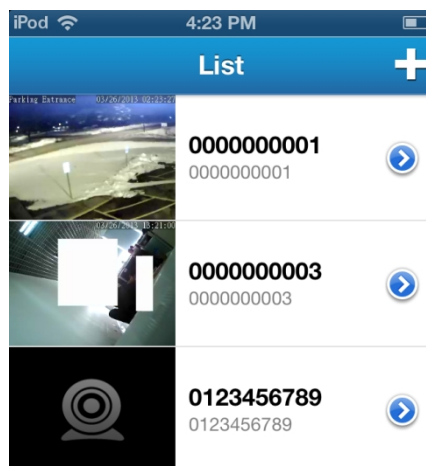
2 Operation Instructions

2.1 Procedure Start

Find and open Zsight, click the ZMODO Zsight icon, then device will automatically entered to "Device List" as follow:



Procedure Start Interface



Device List Interface

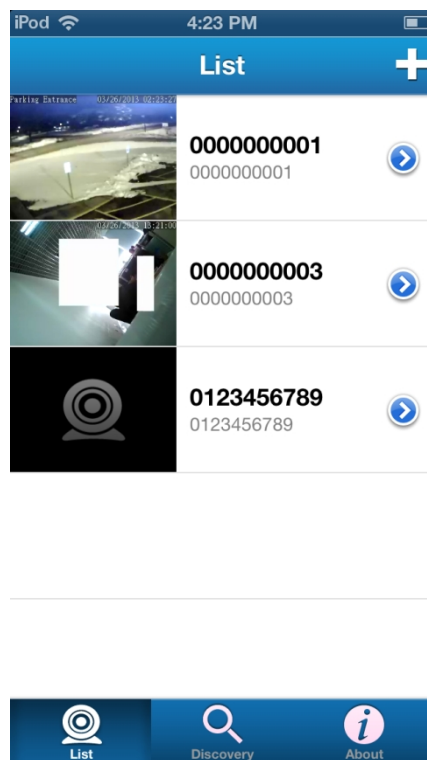
2.2 Device Management

2.2.1 Add Device

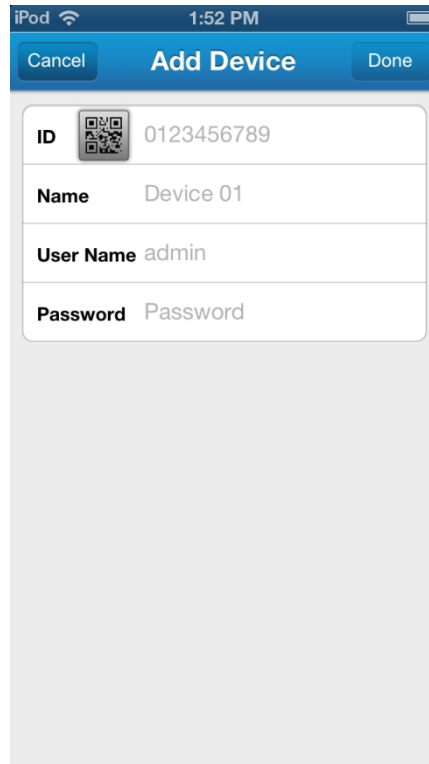
There are mainly two ways to add device: manually and autoadd.

◆ **First Way: Manually**


Click [Add] tab on the upper right corner of title bar to add device, and fill relevant info.



Add



Device Info Interface

ID: Refer to the ten-digit number. There are two ways to get the ID: 1) put the cursor to ID location to manually fill in; 2) click  and scan QR Code with phone, then device will automatically entered to “Wi-Fi interface”(we will introduce how to set network parameter after scanning ID later in this manual)

Name: Device name, with maximum 60 chars

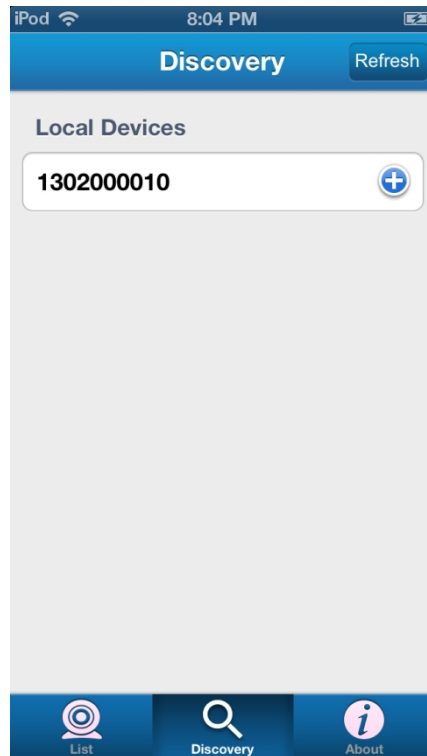
User: Login in or access device with user name; default user name is admin.

Password: Access device with relevant password; default password is 111111.

Input all of the device info, and click [Done] to finish adding device.


◆ **Second way: AutoAdd**

Click [Discovery] tab to enter to “Search Interface”; click [Refresh] tab, your phone will automatically search all local devices; select the desired device to enter to “Add List Interface”, and fill in relevant info.



Search Device Interface

2.2.2 Edit Device

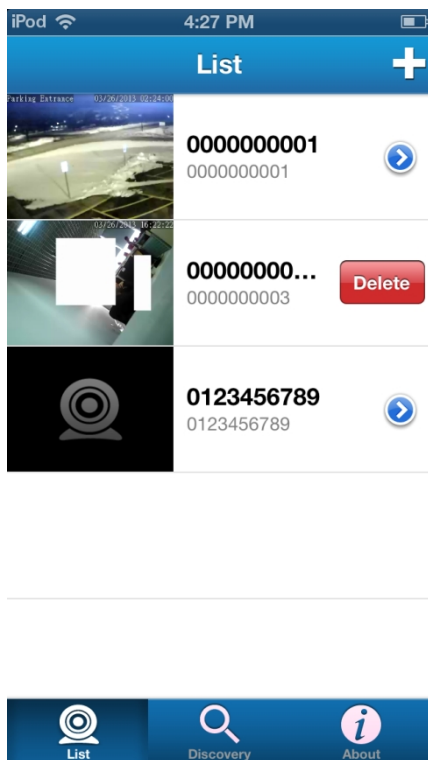
Click  to edit device info, click [Done] tab to save or [Cancel] tab to discard.

2.2.3 Delete Device

Select the to-be-deleted device in “Device List”, swipe to show [Delete] tab, click




to delete device as follow:



Delete Device Interface

2.3 Network Setting

Click  and scan QR Code with phone, the device will automatically entered to Wi-Fi interface:



Wi-Fi Connection

Click the desired Wi-Fi, then “Enter Password Interface” will be displayed:



Enter Wi-Fi Password Interface

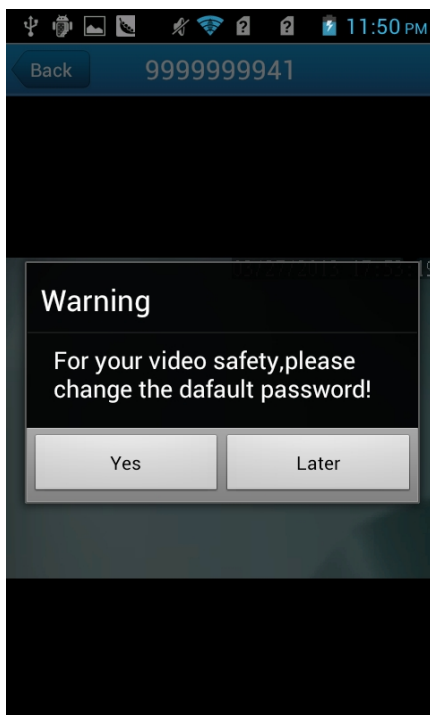
Enter Wi-Fi password, click [Save] to complete Wi-Fi connect setting.

2.4 Video Display

Click any device in “Device List” to enter to “Device Real-time Surveillance Interface” as Figure 2-13. If this is the first time using default password to connect video, “Change Password Interface” will be displayed:



Device Real-time Surveillance Interface



Warning about Changing Password

Click [Later] tab to change password later and [Yes] tab, then “Change Password Interface” will be displayed



Change Login Password Interface

Enter the new password, click [Save] tab when finished.

Adjust phone horizontally or vertically to freely convert landscape and portrait mode.



Portrait Mode

2.5 About

You can refer to “About Interface” for software version and other info.

